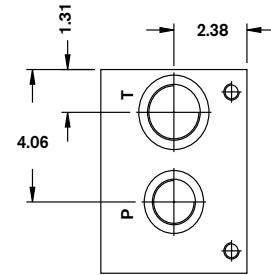
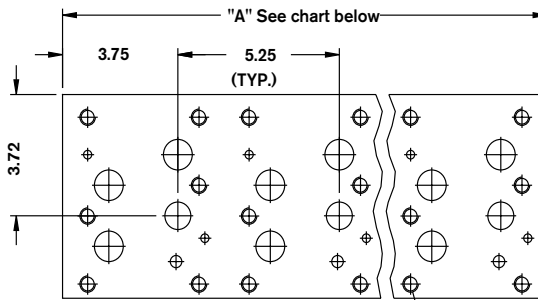
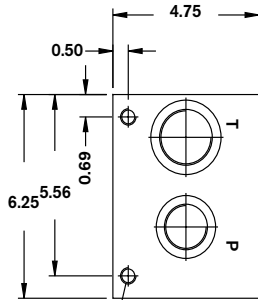
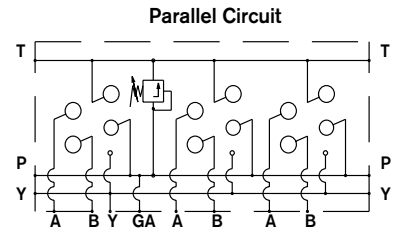
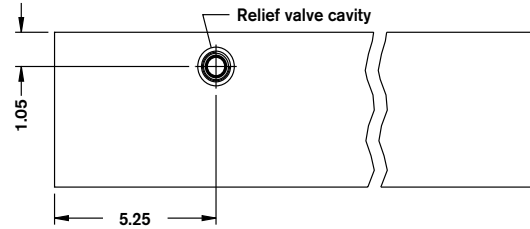
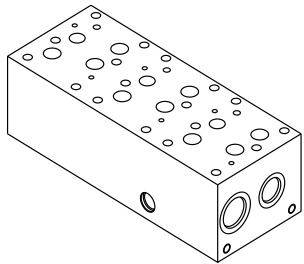


# Bar Manifold

## D08 (Size 22/25) Parallel Circuit Normal Flow

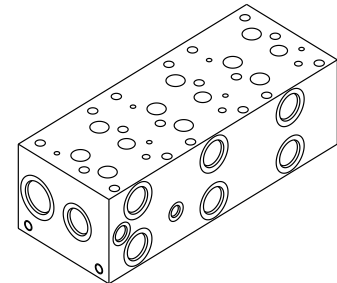
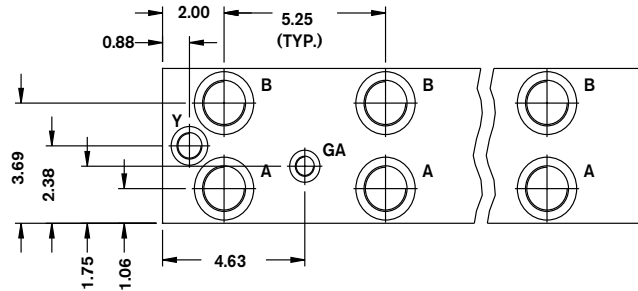
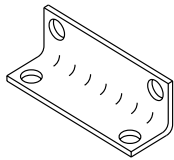
BM22PN - XX / 5 -

Revision	= XX								Omit =	No Options
Number of Station	= 01-07								RCI =	Relief Cavity Industry Common 10-2
Material									RCS =	Relief Cavity Sun T-3A (P in nose)
Aluminum 6061-T6, 3000 psi										
Ductile Iron <sup>1</sup> 65-45-12, 5000 psi										
Valve Spacing 5.25"					= 5				12 =	Ports SAE Threaded Ports



(4) 1/2-13 X .80 DP. (MTG.)

1/2-13 X 1.00 DP. (TYP.)



	T Port	P, A & B Port	Y Port	GA Ports
...12	1-5/8-12 SAE-20	1-5/16-12 SAE-16	3/4-16 SAE-8	9/16-18 SAE-6

Number of Stations	01 <sup>2</sup>	01 <sup>3</sup>	02	03	04	05	06	07
Dim. "A"	5.25	7.00	10.50	15.75	21.00	26.25	31.50	36.75
Approx. Weight AL (lbs)	15	20	30	46	61	76	92	107
Approx. Weight DI (lbs)	41	54	81	121	162	203	243	283

All dimensions in inches