

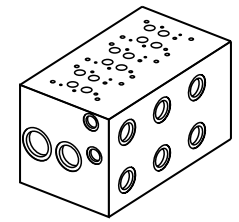
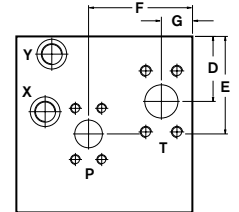
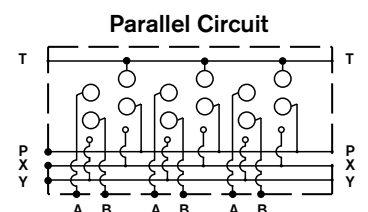
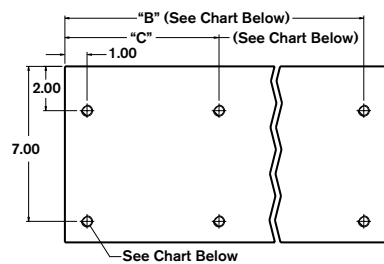
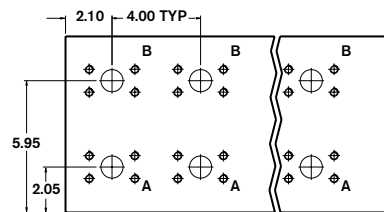
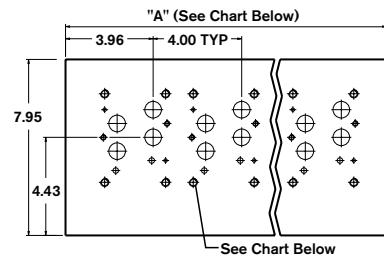
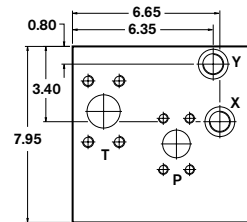
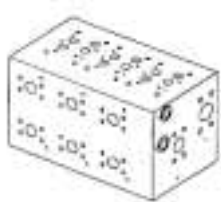
Bar Manifold D07 (Size 16) Parallel Circuit Extra High Flow

BM16PX - XX / D 4 -

Revision	= XX
Number of Station	= 02-06
Material	Ductile Iron ¹ 65-45-12, 5000 psi = D
Valve Spacing 4.0"	= 4

Pressure Rating
L = Low 3000 psi (Code 61)
H = High 6000 psi (Code 62)
 Available only on SAE Flanged Ports

Ports
01 = BSPP Threaded Ports
07 = SAE Flanged
12 = SAE Threaded Ports



Mounting kit not included.

Model Code	Manifold (Mtg.)	Valve (Mtg.)
BM16...07L	1/2-13 x 0.90 DP.	3/8-16 x 0.70 DP.
BM16...07H		1/4-20 x 0.75 DP.
BM16...12		
BM16...01	M12 x 0.90 DP.	M10 x 0.70 DP. M6 x 0.70 DP.

Model Code	P Port	T Port	A & B Ports	X & Y Ports	D	E	F	G
BM16...07L	1-1/4" 3000 PSI (Code 61) SAE Flange	1-1/2" 3000 PSI (Code 61) SAE Flange	1" 3000 PSI (Code 61) SAE Flange	SAE-10	2.94	4.40	4.30	1.40
BM16...07H	1-1/4" 6000 PSI (Code 62) SAE Flange	1-1/2" 6000 PSI (Code 62) SAE Flange	1" 6000 PSI (Code 62) SAE Flange	SAE-10	2.94	4.40	4.30	1.40
BM16...01	1-1/4" BSPP	1-1/2" BSPP	1" BSPP	1/2" BSPP	4.30	4.30	4.35	1.52
BM16...12	SAE-20	SAE-24	SAE-16	SAE-10	4.30	4.30	4.35	1.52

Number of Stations	02	03	04	05	06
Dim. "A"	10.00	14.00	18.00	22.00	26.00
Dim. "B"	9.00	13.00	17.00	21.00	25.00
Dim. "C"	-	-	-	11.00	13.00
Approx. Weight DI (lbs)	164	230	295	361	427

All dimensions in inches