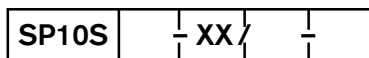


Subplates D05 (Size 10) Side-Ported



Flow
Normal
High
Extra High

= N
= H
= X

Revision

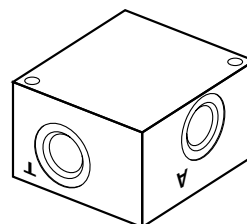
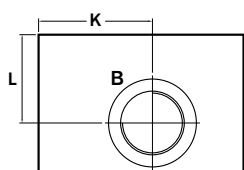
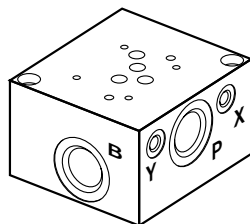
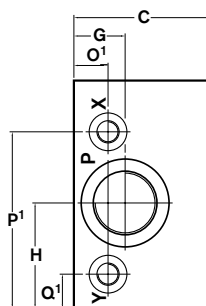
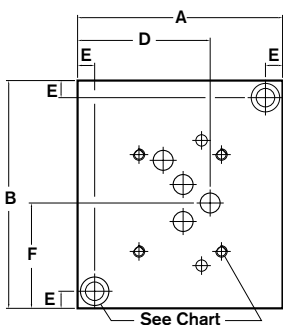
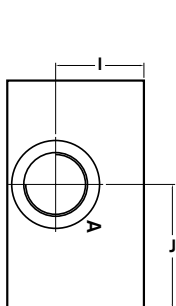
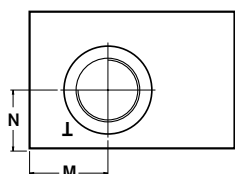
= XX

12 =
05 =
01 =

Ports
SAE Threaded Ports
NPT Threaded Ports
BSP Threaded Ports

A =
D =

Material
Aluminum 6061-T6, 3000 psi
Ductile Iron¹ 65-45-12, 5000 psi



Model	Approx. Wt.	
	Alum.	Iron
SP10SN...	1.5	4.1
SP10SH...	3.1	8.1
SP10SX...	6.6	17.6

Port type	Ports			X & Y Ports			Mounting Bolts			Valve Mtg	
	12	05	01	12	05	01	12	05	01	05 & 12	01
SP10SN-1X/...	3/4-16 SAE-8	NPT 1/2"	G (BSP) 1/2"	7/16-20 SAE-4	NPT 1/4"	G (BSP) 1/4"	3/8-16 x 1.25 LG SHCS	3/8-16 x 1.25 LG SHCS	M10-1.5 x (35) LG SHCS	1/4-20	M6-1.0
SP10SH-1X/...	1-1/16-12 SAE-12	NPT 3/4"	G (BSP) 3/4"	7/16-20 SAE-4	NPT 1/4"	G (BSP) 1/4"	3/8-16 x 1.75 LG SHCS	3/8-16 x 1.75 LG SHCS	M10-1.5 x (45) LG SHCS	x 0.60 DP	x (15.2) DP
SP10SX-1X/...	1-5/16-12 SAE-16	NPT 1"	G (BSP) 1"	7/16-20 SAE-4	NPT 1/4"	G (BSP) 1/4"	3/8-16 x 3.00 LG SHCS	3/8-16 x 3.00 LG SHCS	M10-1.5 x (75) LG SHCS		

Dimension	A	B	C	D	E	F	G	H	I	J	K	L	M	N	O ²	P ²	Q ²
SP10SN-1X/...	3.13	4.00	1.25	2.25	0.38	2.00	0.62	2.00	0.62	2.22	1.62	0.63	1.37	0.62			
SP10SH-1X/...	3.75	4.75	1.75	2.53	0.38	2.38	0.87	2.38	0.87	2.62	1.88	0.87	1.88	0.87	1.31	3.75	0.81
SP10SX-1X/...	4.50	5.00	3.00	2.91	0.38	2.31	1.13	2.31	1.94	2.72	2.50	1.94	1.72	1.28	0.75	3.88	0.75

All dimensions in inches