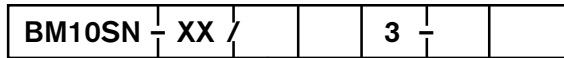
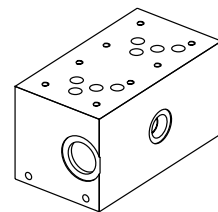
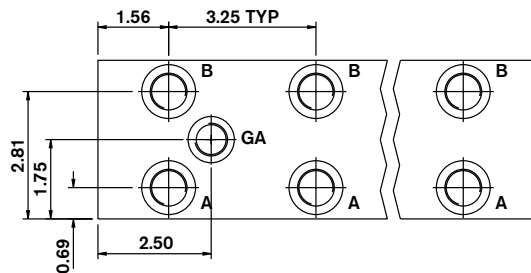
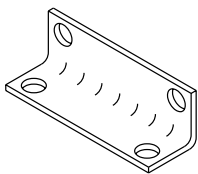
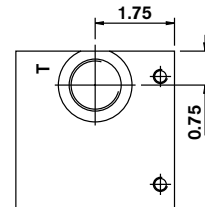
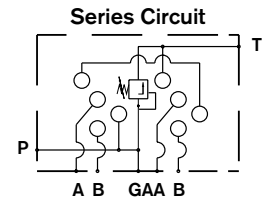
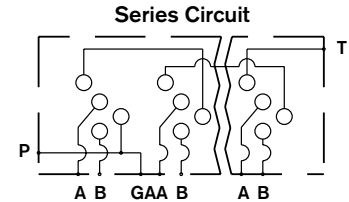
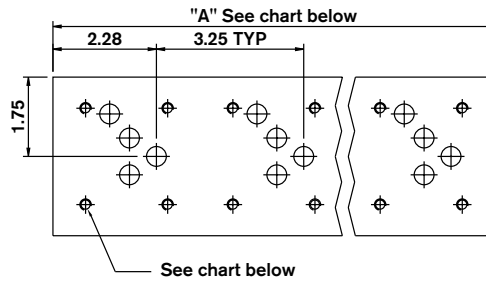
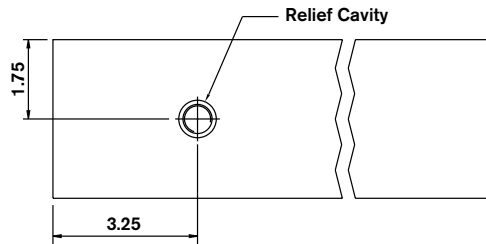
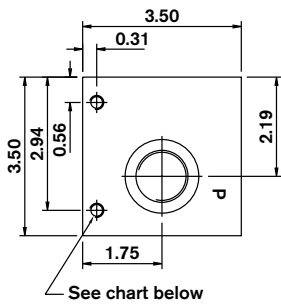
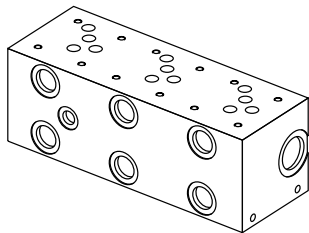


Bar Manifold D05 (Size 10) Series Circuit Normal Flow



Revision	= XX
Number of Station	= 02-04
Material	= A = D
Valve Spacing 3.25"	= 3

Omit =	No Options
RCI =	Relief Cavity Industry Common 10-2
RCS =	Relief Cavity Sun T-3A (P in nose)
12 =	SAE Threaded Ports



P & T Ports	A & B Ports	GA Ports	Manifold (Mtg.)	Valve (Mtg.)
...12	1-1/16-12 SAE-12	3/4-16 SAE-8	5/16-18 x 0.50 DP.	1/4-20 x 0.60 DP.

Number of Stations	02	03	04
Dim. "A"	6.50	9.75	13.00
Approx. Weight AL (lbs)	8	12	16
Approx. Weight DI (lbs)	20	31	41

All dimensions in inches