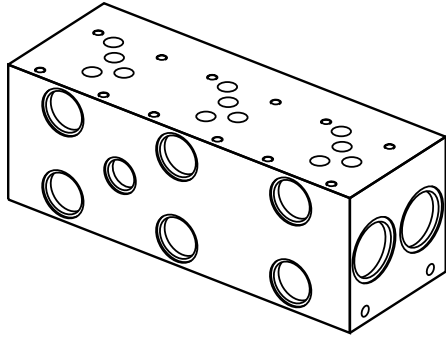


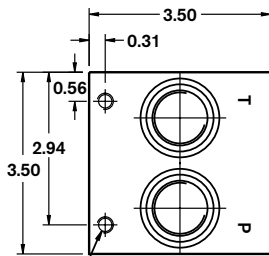
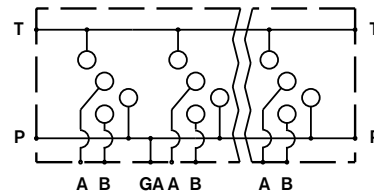
# ISO Bar Manifold D05 (Size 10) Parallel Circuit Normal Flow

IBM10PN - XX / D 3 - 50 M

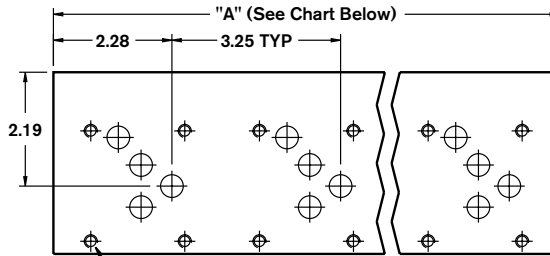
Revision	= XX	M =	Metric Mounting Taps
Number of Station	= 01-08	50 =	Metric Threaded Ports
Material	= D		P & T: M27 x 2
Ductile Iron <sup>1</sup> 65-45-12, 5000 psi			A & B: M18 x 1.5
Valve Spacing 3.25"	= 3		GA: M12 x 1.5



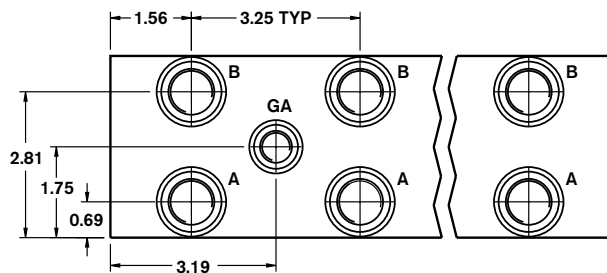
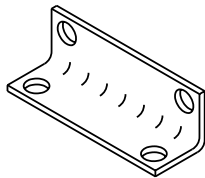
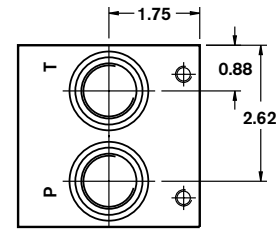
Parallel Circuit



(2) M8 x .60 DP.



M6 x 1.0 - 0.60 DP. (TYP.)



Number of Stations	01 <sup>2</sup>	02	03	04	05	06	07	08
Dim. "A"	3.25	6.50	9.75	13.00	16.25	19.50	22.75	26.00
Approx. Weight DI (lbs)	10	21	31	41	52	62	72	83