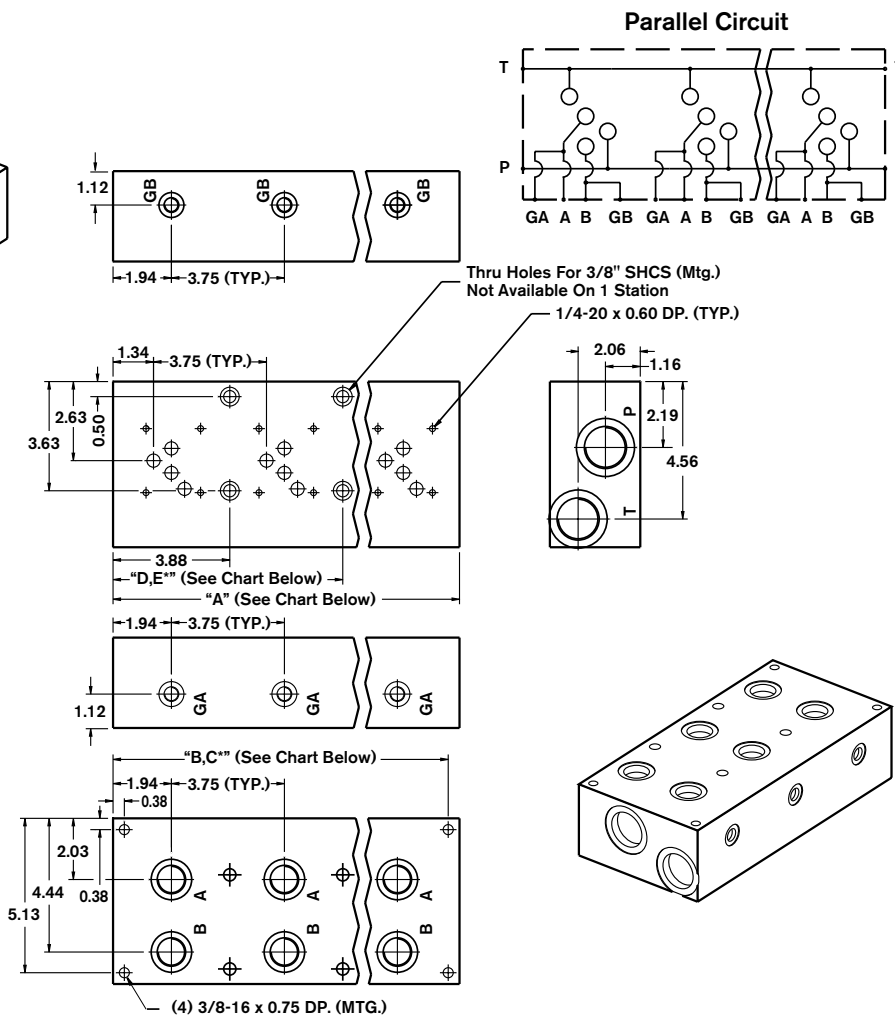
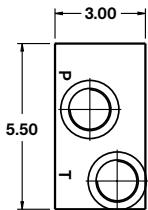
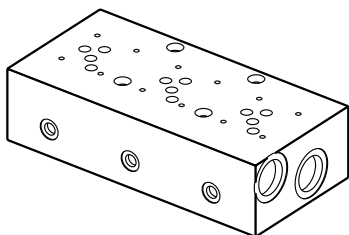


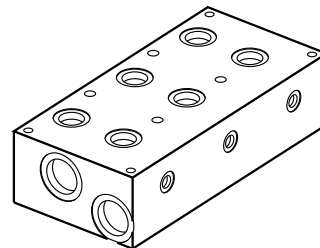
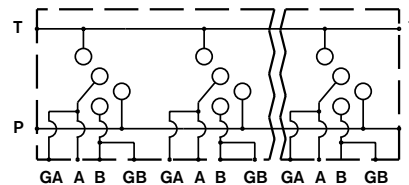
Bar Manifold D05 (Size 10) Parallel Circuit Low Flow

ABM10PL - XX / D 3 - 12 G

| | | | |
|--|---------|------|-------------------------|
| Revision | = XX | G = | Gauge Ports for A and B |
| Number of Station | = 01-08 | 12 = | SAE Threaded Ports |
| Material | = D | | P & T: 1 5/16-12 SAE-16 |
| Ductile Iron ¹ 65-45-12, 5000 psi | | | A & B: 7/8-14 SAE-10 |
| Valve Spacing 3.75" | = 3 | | GA: 7/16-20 SAE-4 |



Parallel Circuit



| Number of Stations | 01 | 02 | 03 | 04 | 05 | 06 | 07 | 08 |
|-------------------------|-------|-------|--------|--------|--------|--------|--------|--------|
| Dim. "A" | 4.00 | 7.75 | 11.50 | 15.25 | 19.00 | 22.75 | 26.50 | 30.25 |
| Dim. "B" | 3.625 | 7.375 | 11.125 | 14.875 | 18.625 | 22.375 | 26.125 | 29.875 |
| Dim. "C" ² | - | - | - | - | - | 11.125 | 14.875 | 14.875 |
| Dim. "D" | - | - | 7.625 | 11.375 | 15.125 | 18.875 | 22.625 | 26.375 |
| Dim. "E" ² | - | - | - | - | - | 11.563 | 11.375 | 15.312 |
| Approx. Weight DI (lbs) | 17 | 33 | 49 | 65 | 82 | 98 | 114 | 130 |

All dimensions in inches