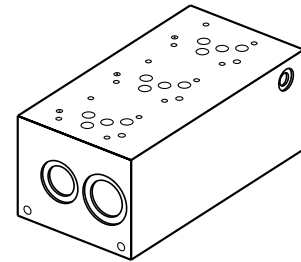
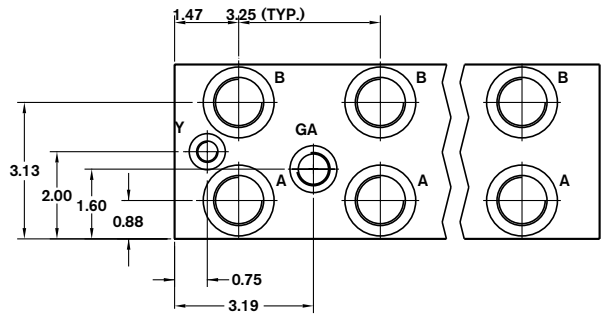
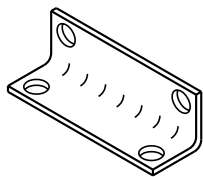
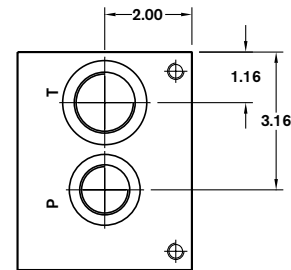
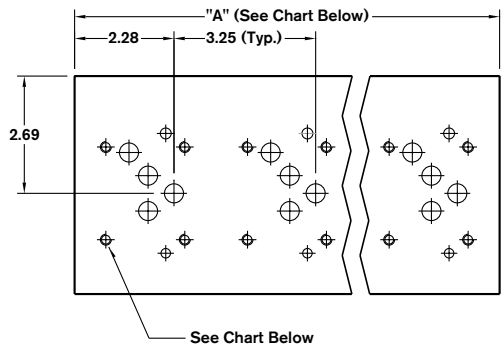
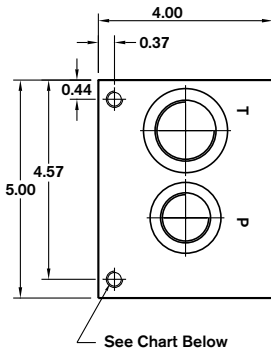
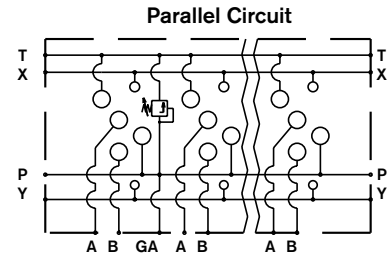
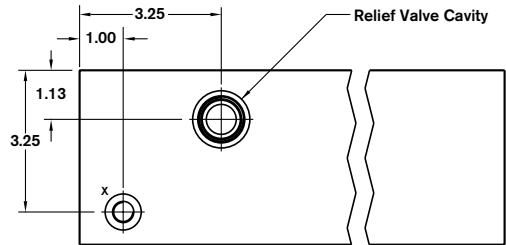
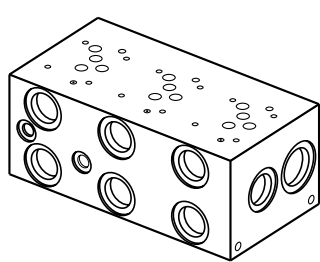


# Bar Manifold

## D05 (Size 10) Parallel Circuit High Flow

BM10PH - XX / 3

Revision	= XX								Omit =	No options
Number of Station	= 01-12								RCI =	Relief Cavity Industry Common 10-2
Material									RCS =	Relief Cavity Sun T-3A (P in nose)
Aluminum 6061-T6, 3000 psi										
Ductile Iron <sup>1</sup> 65-45-12, 5000 psi										
Valve Spacing 3.25"				= 3						<b>Ports</b>
										SAE Threaded Ports
										BSPF Threaded Ports



T Port	P, A & B Ports	GA, X & Y Ports	Manifold (Mtg.)	Valve (Mtg.)	
...12	1-5/16-12 SAE-16	1-1/16-12 SAE-12	9/16-18 SAE-6	3/8-16 x 0.55 DP.	1/4-20 x 0.60 DP.
...01	1" BSPP	3/4" BSPP	1/4" BSPP	M10 x 0.60 DP.	M6 x 0.60 DP.

Number of Stations	01 <sup>2</sup>	02	03	04	05	06	07	08 - 12
Dim. "A"	3.25 <sup>3</sup>	6.50	9.75	13.00	16.25	19.50	22.75	Consult Factory
Approx. Weight AL (lbs)	6	13	19	25	32	38	45	
Approx. Weight DI (lbs)	17	34	51	68	85	101	118	

All dimensions in inches