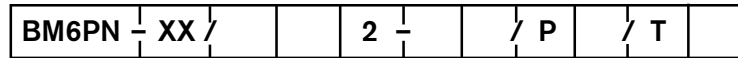
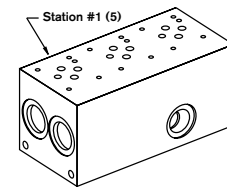
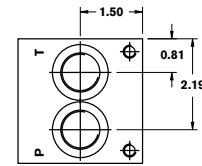
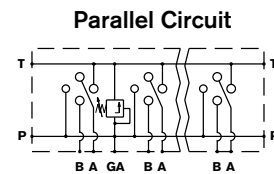
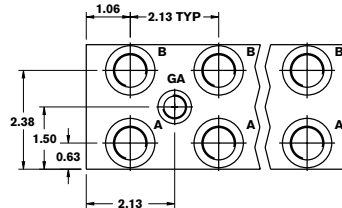
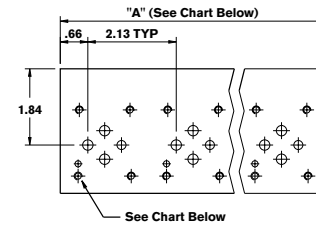
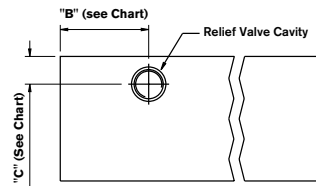
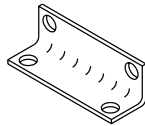
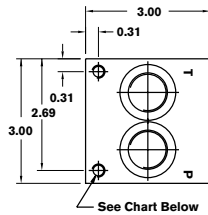
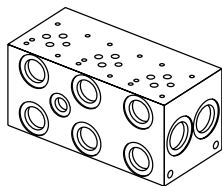


Bar Manifold

D03 (Size 6) Parallel Circuit Normal Flow



Revision	= XX								Isolations between stations ⁵⁾
Number of Station	= 01-16								Omit = No options
Material									T = Tank Isolation ⁴⁾
Aluminum 6061-T6, 3000 psi	= A								Isolations between stations ⁵⁾
Ductile Iron ¹ 65-45-12, 5000 psi	= D								Omit = No options
Valve Spacing 2.13"	= 2								P = Pressure Isolation ⁴⁾
SAE Threaded Ports	= 12								Omit = No options
NPT Threaded Ports	= 05								RCI = *Relief Cavity Industry Common 10-2
BSPP Threaded Ports	= 01								RCS = *Relief Cavity Sun T-10A (P in nose)



	P & T Ports	A & B Ports	GA Port	Manifold (Mtg.)	Valve (Mtg.)
...12	7/8-14 SAE-10	3/4-16 SAE-8	9/16-18 SAE-6	5/16-18 x 0.45 DP.	10-24 x 0.50 DP.
...05	1/2" NPT	3/8" NPT	1/4" NPT	5/16-18 x 0.45 DP.	10-24 x 0.50 DP.
...01	1/2" BSPP	3/8" BSPP	1/4" BSPP	M8 x 0.45 DP.	M5 x 0.50 DP.

Number of Stations	01 ²	02	03	04	05	06	07	08	09 - 16
Dim. "A"	2.13 ³	4.25	6.38	8.50	10.63	12.75	14.88	17.00	
Dim. "B" RCI	1.688	2.125	2.125	2.125	2.125	2.125	2.125	2.125	
Dim. "C" RCI	0.906	0.906	0.906	0.906	0.906	0.906	0.906	0.906	
Dim. "B" RCS	1.906	2.125	2.125	2.125	2.125	2.125	2.125	2.125	Consult Factory
Dim. "C" RCS	1.062	1.062	1.062	1.062	1.062	1.062	1.062	1.062	
Approx. Weight AL (lbs)	3	4	6	8	9	11	13	15	
Approx. Weight DI (lbs)	7	10	15	20	25	30	35	40	

All dimensions in inches