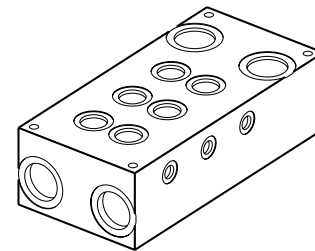
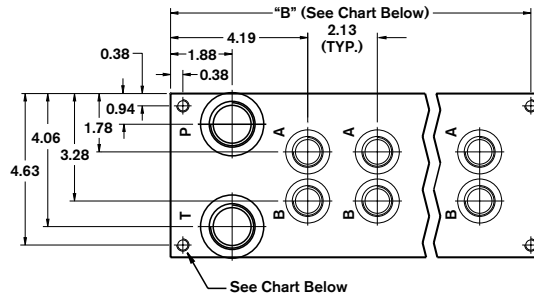
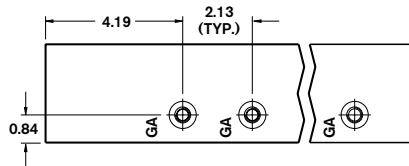
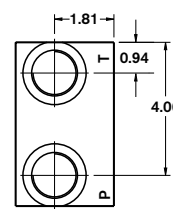
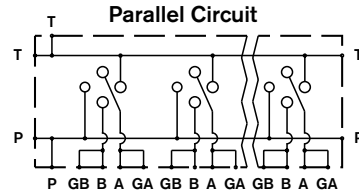
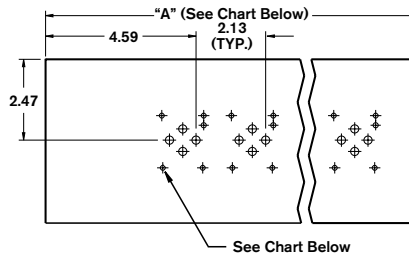
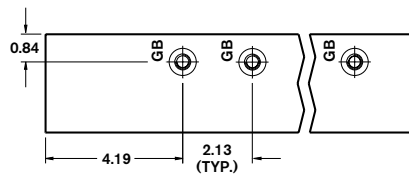
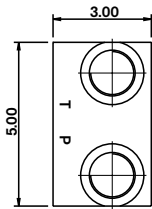
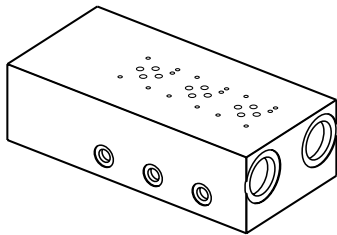


Bar Manifold

D03 (Size 6) Parallel Circuit Normal Flow with Bottom-Ported P & T

ABM6PN	-	XX	/			D		2	-			G		B	
--------	---	----	---	--	--	---	--	---	---	--	--	---	--	---	--

Revision	= XX														Omit =	UNC Mounting Taps
Number of Station	= 01-08														M =	Metric Mounting Taps
Material																BSPB Ports only
Ductile Iron ¹ 65-45-12, 5000 psi						= D									B =	Bottom Ported P and T
Valve Spacing 2.125"								= 2							G =	Gauge Ports for A and B
SAE Threaded Ports																= 12
BSPP Threaded Ports																= 01



	P & T Ports	A & B Ports	GA & GB Ports	Manifold (Mtg.)	Valve (Mtg.)
...12G	1-5/16-12 SAE-16	7/8-14 SAE-10	7/16-20 SAE-4	3/8-16 x 0.75 DP.	10-24 x 0.50 DP.
...01GM	1" BSPP	1/2" BSPP	1/4" BSPP	M10 x 0.75 DP.	M5 x 0.50 DP.

Number of Stations	01	02	03	04	05	06	07	08
Dim. "A"	6.25	8.25	10.50	12.50	14.75	16.75	19.00	21.00
Dim. "B"	5.865	7.875	10.125	12.125	14.375	16.375	18.625	20.625
Approx. Weight DI (lbs)	25	32	41	49	58	66	74	82

All dimensions in inches