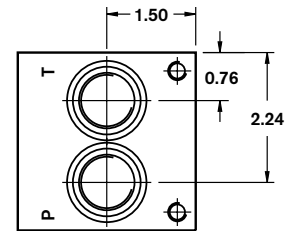
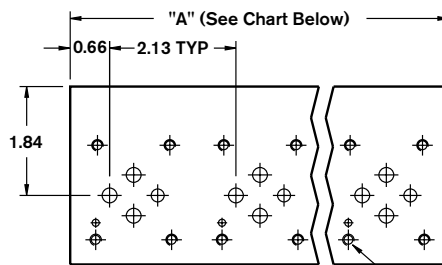
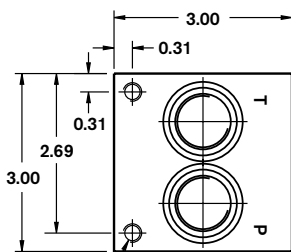
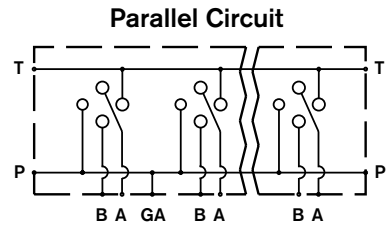
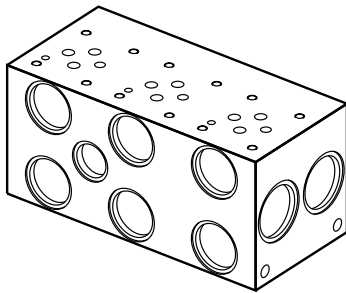


ISO Bar Manifold D03 (Size 6) Parallel Circuit Normal Flow

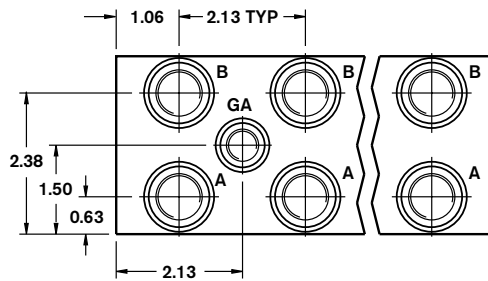
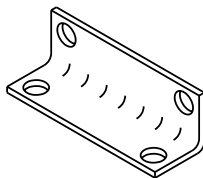
IBM6PN	-	XX	/		D	2	-	50	M
--------	---	----	---	--	---	---	---	----	---

Revision	= XX			M =	Metric Mounting Taps
Number of Station	= 01-08			50 =	Metric Threaded Ports
Material		= D			P & T: M22 x 1.5
Ductile Iron ¹ 65-45-12, 5000 psi					A & B: M18 x 1.5
Valve Spacing 2.125"			= 2		GA: M12 x 1.5



(2) M8 x .45 DP.

M5 x 0.8 - 0.50 DP. (TYP.)



Number of Stations	01 ²	02	03	04	05	06	07	08
Dim. "A"	2.13	4.25	6.38	8.50	10.63	12.75	14.88	17.00
Approx. Weight DI (lbs)	5	10	15	20	25	30	35	40