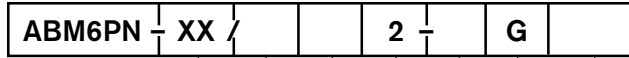
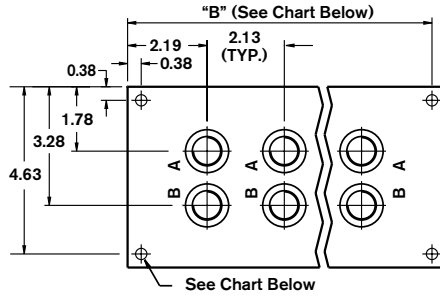
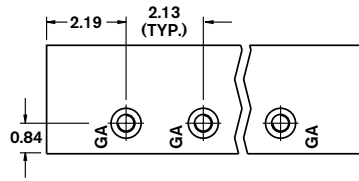
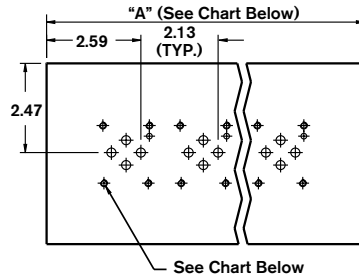
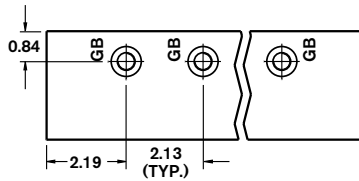
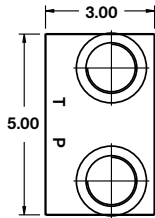
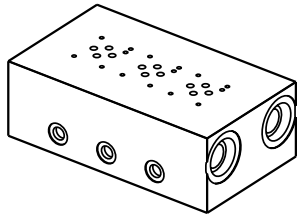


Bar Manifold D03 (Size 6) Parallel Circuit Normal Flow

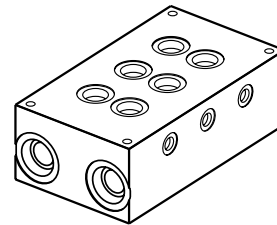
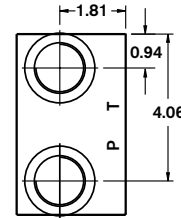
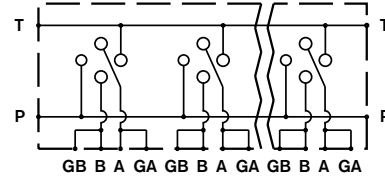


Revision	= XX
Number of Station	= 01-08
Material	= A = D
Valve Spacing 2.125"	= 2

Omit =	UNC Mounting Taps
M =	Metric Mounting Taps
	BSPP Ports only
G =	Gauge Ports for A and B
12 =	SAE Threaded Ports
01 =	BSPP Threaded Ports



Parallel Circuit



P & T Ports	A & B Ports	GA & GB Ports	Manifold (Mtg.)	Valve (Mtg.)
...12G	1-5/16-12 SAE-16	7/8-14 SAE-10	3/8-16 x 0.75 DP.	10-24 x 0.50 DP.
...01GM	1" BSPP	1/2" BSPP	M10 x 0.75 DP.	M5 x 0.50 DP.

Number of Stations	01	02	03	04	05	06	07	08
Dim. "A"	4.50	6.50	8.75	10.75	13.00	15.00	17.25	19.25
Dim. "B"	4.125	6.125	8.375	10.375	12.625	14.625	16.875	18.875
Approx. Weight DI (lbs)	18	25	34	42	51	59	67	75
Approx. Weidht AL (lbs)	7	9	13	16	19	22	25	28

All dimensions in inches