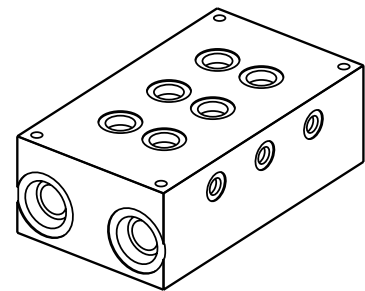
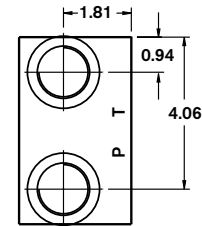
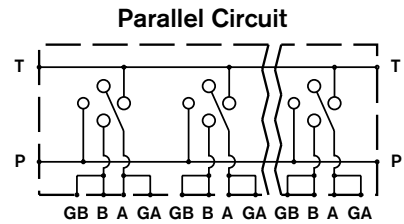
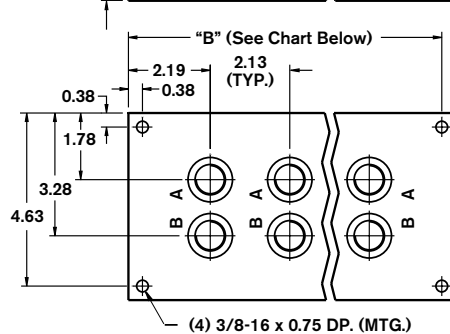
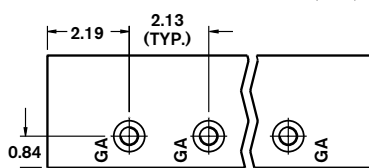
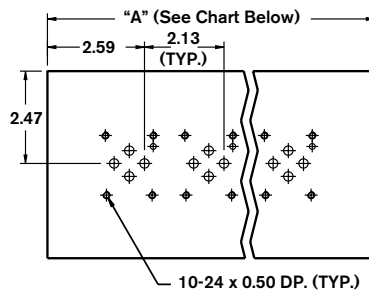
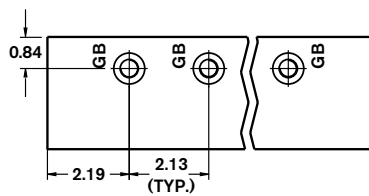
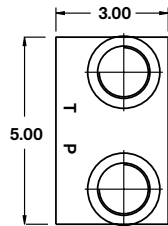
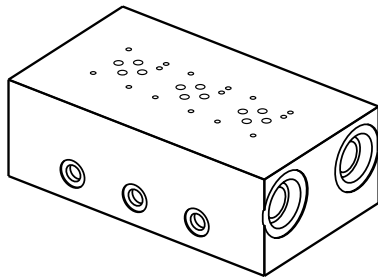


Bar Manifold

D03 (Size 6) Parallel Circuit Low Flow

ABM6PL - XX / D 2 - G

Revision	= XX				G =	Gauge Ports for A and B
Number of Station	= 01-08				12 =	SAE Threaded Ports
Material		= D				P & T: 1 5/16-12 SAE-16
Ductile Iron ¹ 65-45-12, 5000 psi						A & B: 3/4-16 SAE-8
Valve Spacing 2.125"			= 2			GA: 7/16-20 SAE-4



Number of Stations	01	02	03	04	05	06	07	08
Dim. "A"	4.50	6.50	8.75	10.75	13.00	15.00	17.25	19.25
Dim. "B"	4.125	6.125	8.375	10.375	12.625	14.625	16.875	18.875
Approx. Weight DI (lbs)	18	25	34	42	51	59	67	75

All dimensions in inches