

Bar Manifold D03 (Size 6) Parallel Circuit High Flow

BM6PH - XX / 2 -

Revision = XX

Number of Station = 01-10

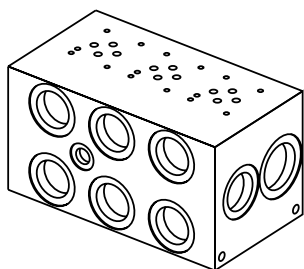
Material = A

Aluminum 6061-T6, 3000 psi

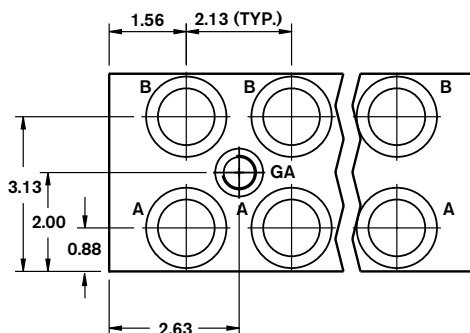
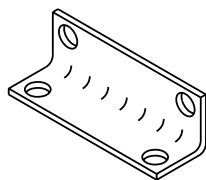
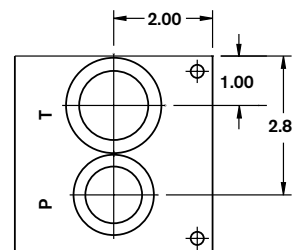
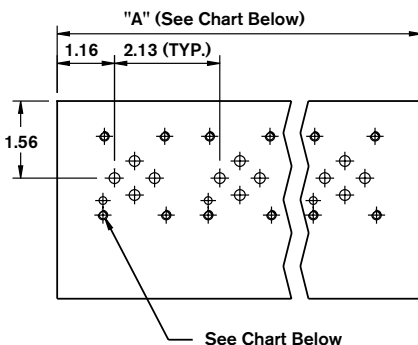
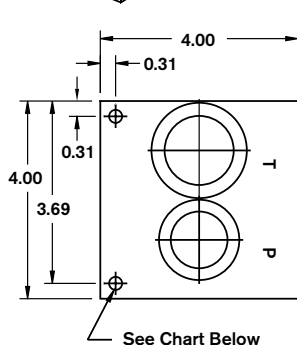
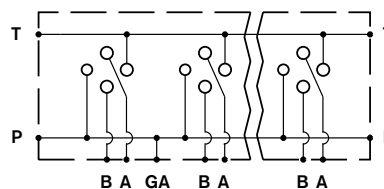
Ductile Iron¹ 65-45-12, 5000 psi = D

12 =
01 =
2 =

Ports
SAE Threaded Ports
BSPP Threaded Ports
Valve Spacing 2.13"



Parallel Circuit



T Port	A, B, & P Ports	GA Port	Manifold (Mtg.)	Valve (Mtg.)	
...12	1-5/16-12 SAE-16	1-1/16-12 SAE-12	9/16-18 SAE-6	5/16-18 x 0.45 DP.	10-24 x 0.50 DP.
...01	1" BSPP	3/4" BSPP	1/4" BSPP	M8 x 0.45 DP.	M5 x 0.50 DP.

Number of Stations	01 ²	02	03	04	05	06	07	08	09 - 10
Dim. "A"	3.13	5.25	7.38	9.50	11.63	13.75	15.88	18.00	Consult Factory
Approx. Weight AL (lbs)	5	8	12	15	18	22	25	28	
Approx. Weight DI (lbs)	13	18	31	40	48	57	66	75	

All dimensions in inches