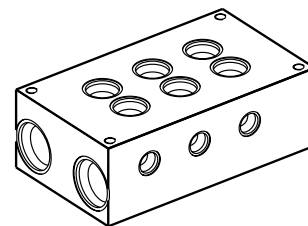
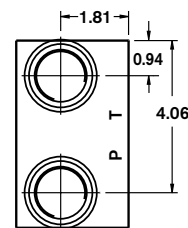
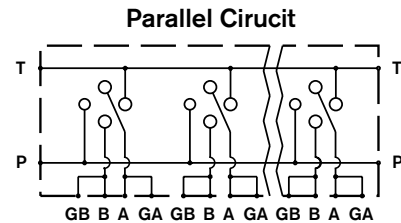
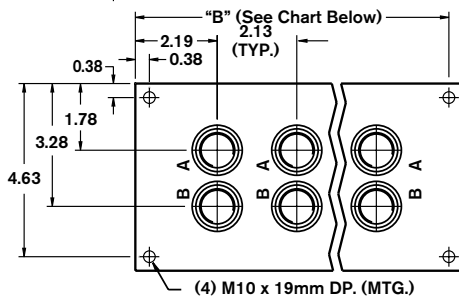
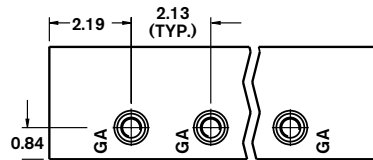
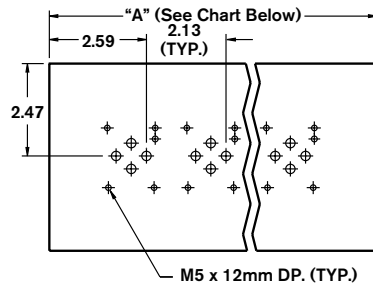
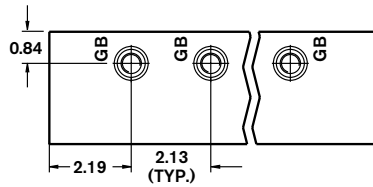
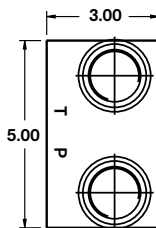
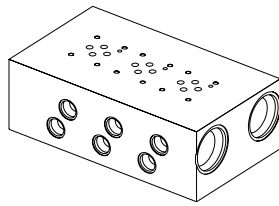


Bar Manifold

D03 (Size 6) Parallel Circuit High Flow with ISO 6149-1

ABM6PH	- XX /	D	2	50	G	M
--------	--------	---	---	----	---	---

Revision	= XX					M =	Metric Mounting Taps ISO 6149-1 Ports only
Number of Station	= 01-08					G =	Gauge Ports for A and B
Material		= D				50 =	ISO 6149-1 P & T: M33 x 2 A & B: M22 x 1.5 GA: M12 x 1.5
Valve Spacing 2.125"			= 2				



Number of Stations	01	02	03	04	05	06	07	08
Dim. "A"	4.50	6.50	8.75	10.75	13.00	15.00	17.25	19.25
Dim. "B"	4.125	6.125	8.375	10.375	12.625	14.625	16.875	18.875
Approx. Weight DI (lbs)	18	25	34	42	51	59	67	75